

# LOBBYVU

for the Big Screen



No need to log onto the energy portal, with LobbyVu connected to a public screen you can show off what is happening to your site without logging onto SolarVu.

## What is this?

LobbyVu provides the user 24/7 visual display of their solar site that can showcase 'data points' selected by the customer.

## Is it easy to Install?

1. Plug ethernet cable to 'LobbyVu' box
2. Plug HDMI from box to designated Screen
3. Connect plug from receptable to box
4. TURN ON & DONE



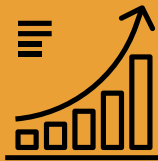
## Can I decide what I want displayed? ABSOLUTELY!

You can add functionality via adding SolarVu features.

Weather



Historical Data



Energy Flow



Top Performance



ROI



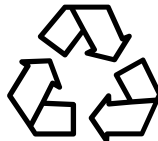
Solar Generation



Building consumption



GHG Reduction



Live Camera



Site Photos



Certain displays are not included and require additional installs accordingly  
**Please contact Cachelan for pricing and more info!**  
Is available upon the purchase of SolarVu

**CONTACT US!**

905 470-8400

[contactus@cachelan.com](mailto:contactus@cachelan.com)

**FIND US!**

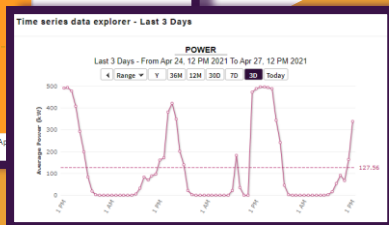
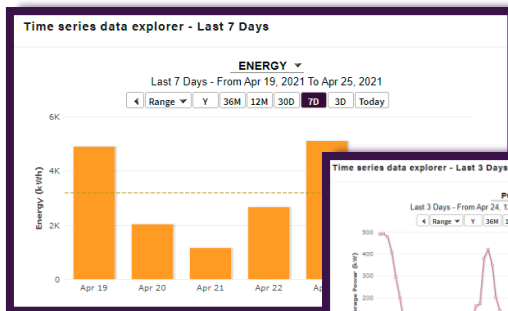


# LOBBYVU

for the Big Screen

LobbyVu is an extension of your SolarVu energy portal. Use the media device to display real status and live statistics. LobbyVu needs to be purchased and requires that the SolarVu portal has an active subscription.

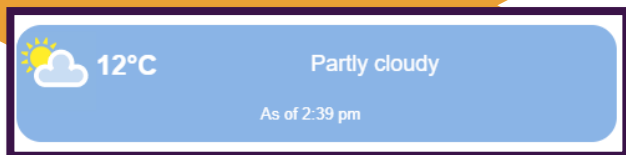
## LOBBYVU for Solar Generation



### Energy Generation

Graphical display that showcases how much solar energy your site has been generating over time. Capable of seeing historical data on a number of time frames which rotate for dynamic display.

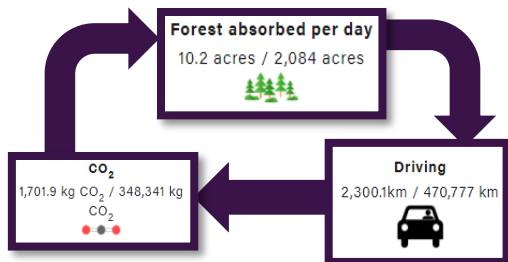
### Daily Weather



Take a look at the weather to see how that may affect your site's production for the day.



Know how much your site has been producing, as well as revenue generated, at all times.



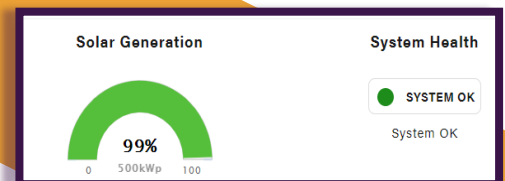
### GHG Widgets

Let people know how Solar is helping the environment and promoting sustainability.



### Site Camera

Post photos of the site to display in an updating slideshow or see the site live. Requires SnoCam feature for live site view.



### Site Now

View the capacity of your solar site performance in real time and see if our monitoring system is healthy.

**CONTACT US!**

905 470-8400

[contactus@cachelan.com](mailto:contactus@cachelan.com)

**Cachelan**  
**SolarVu**

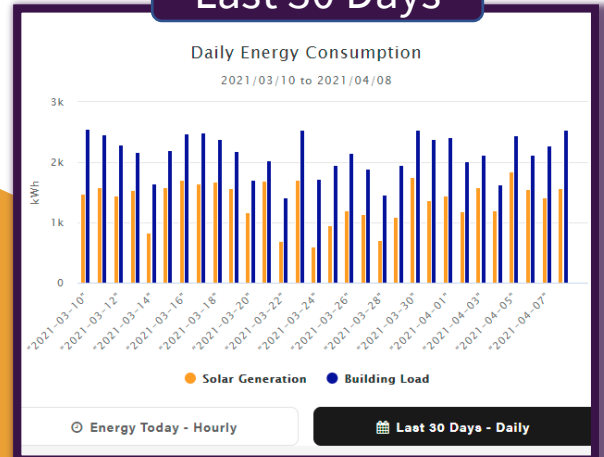
## LOBBYVU for Building Consumption

All of the features of Solar Generation PLUS building specific features! Available as a part of NRG Pilot sites! Requires a site to have a connected meter point to measure grid import/export.

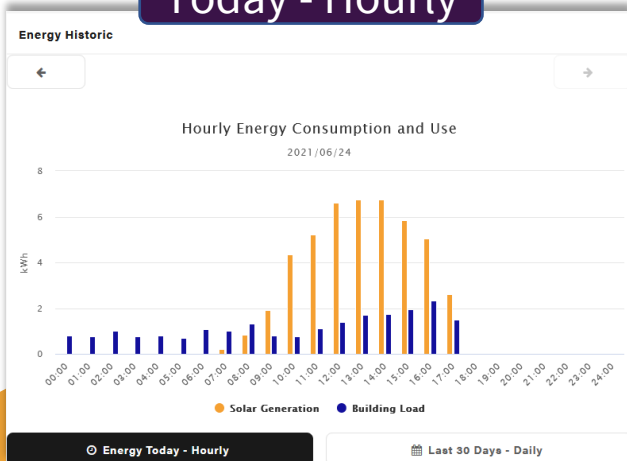
Graphical display that showcases how much your building is consuming in comparison to the amount of energy generated from your solar site. Capable of seeing historical data on an hourly basis & the past 30 days.

View and traverse the building consumption and compare it with solar generation!

### Last 30 Days



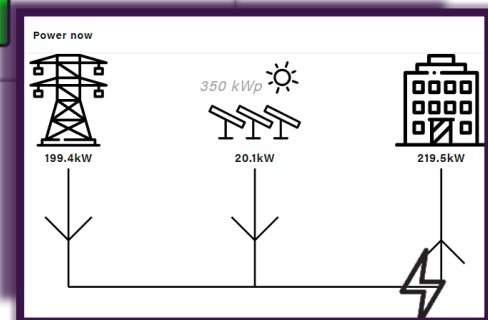
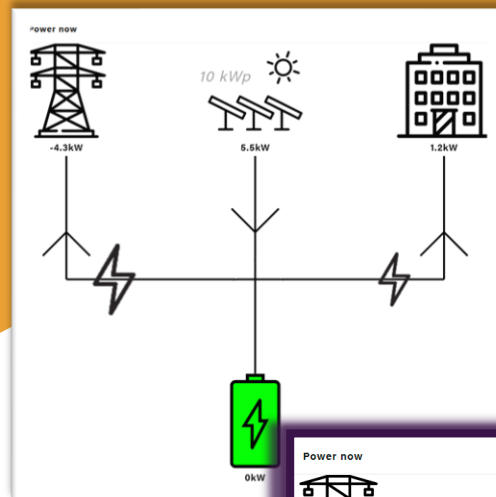
### Today - Hourly



## Energy Flow

See how much energy your building is utilizing from solar & from the grid, as well as measuring building consumption. Requires a building meter for building consumption data.

If your site has a battery, it's fullness will change depending on the State of Charge.



**CONTACT US!**

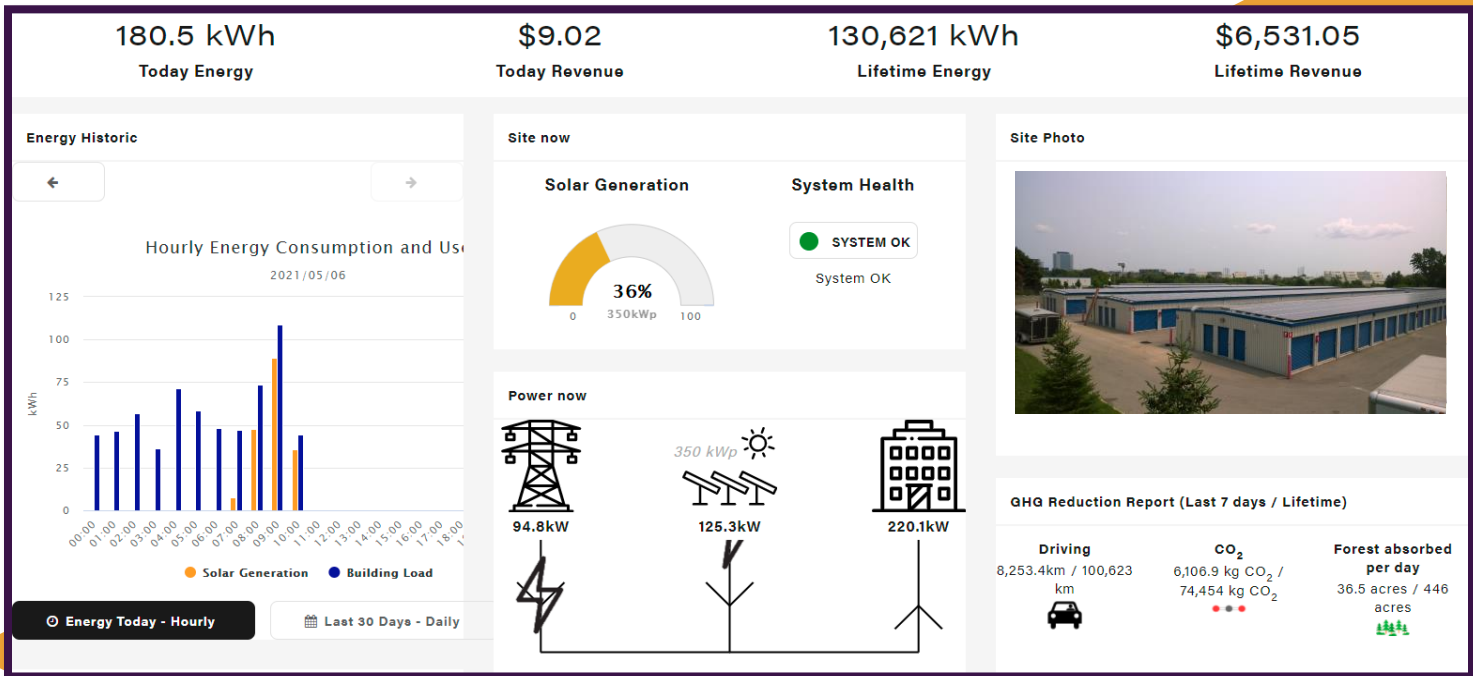
905 470-8400

[contactus@cachelan.com](mailto:contactus@cachelan.com)

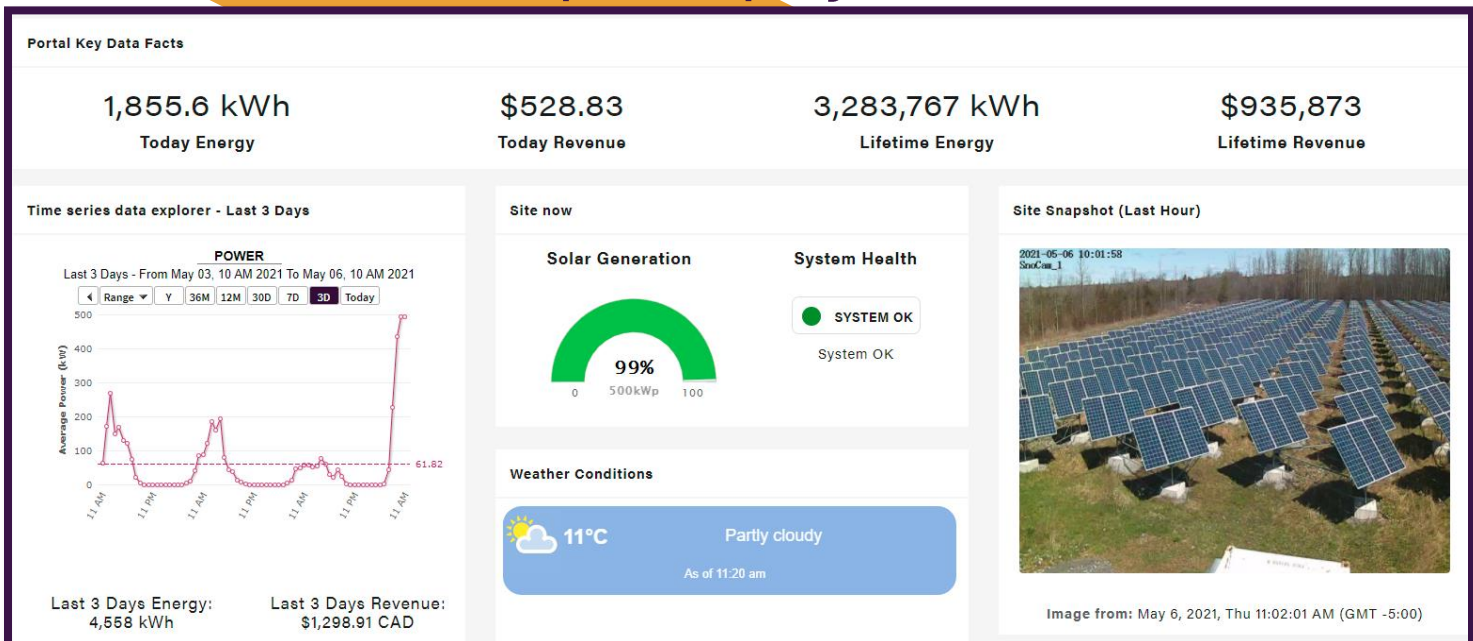
# LOBBYVU

for the Big Screen

## LOBBYVU sample display Building Consumption



## LOBBYVU sample display Solar Generation



CONTACT US!

905 470-8400

[contactus@cachelan.com](mailto:contactus@cachelan.com)

**Cachelan**  
**SolarVu**